

# NEW PRODUCT



**SURE-STEP™**  
DOCK & DECKING

## PREMIER SERIES

Available in 2'x4' or 4'x4'

Will span up to 36" with reinforcement

16" span without reinforcement

- Drop-in panels for easy and quick installation process
- High impact material exceeds competition
- **ADA compliant** with a non-slip surface
- More open tread area to allow for more light penetration
- Withstands storm surges
- Minimizes wave and wind forces

### Our products are:

- Barefoot friendly
- Have surfaces that remain cool
- Environmentally conscious
- Durable and long lasting

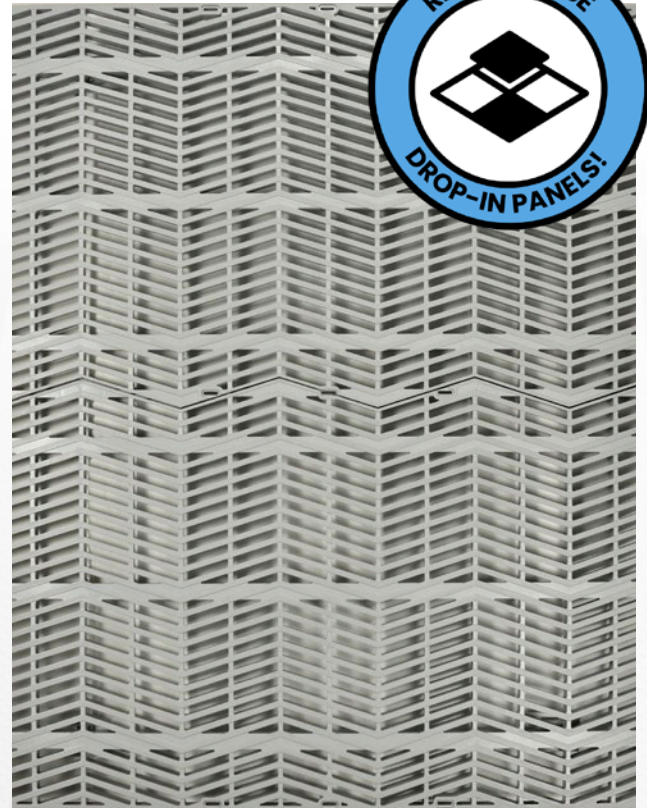
Perspective Products' manufacturing expertise dates back to 1989. We continue to manufacture high-quality, long-lasting, durable products with ISO 9001:2015 standards.

Our proven test results—along with a warranty that exceeds most competitors'—will give you the assurance you need.

**LIFETIME LIMITED WARRANTY**



**PERSPECTIVE™**  
**PRODUCTS**  
DOCK & DECKING



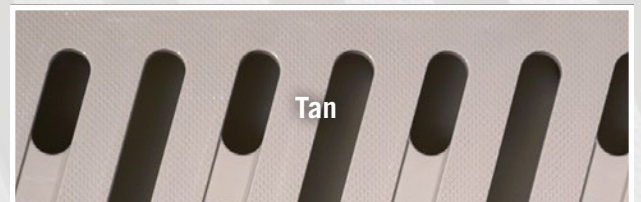
*While we've made every attempt to illustrate color options, photos are not an exact color match. Please feel free to contact us if you are in need of a color sample.*



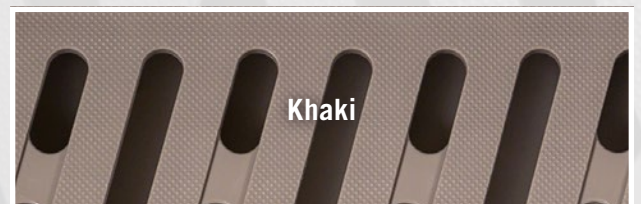
Gray



White



Tan



Khaki



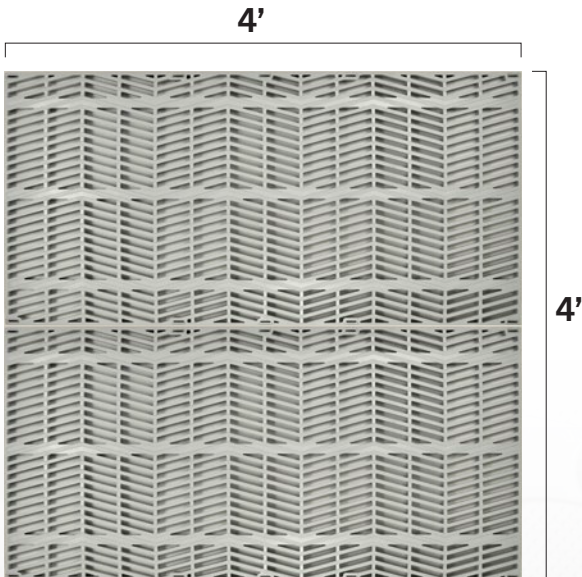
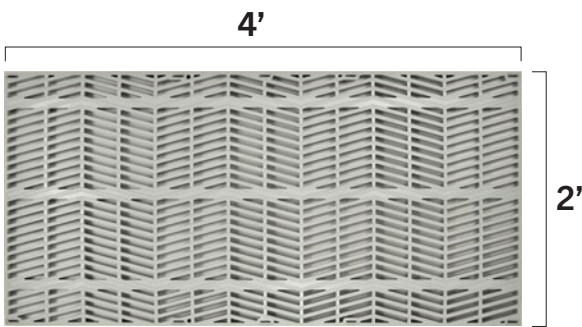
## SPECIFICATIONS AND MEASUREMENTS

<b>Base material</b>	100% virgin polypropylene	
<b>Thickness</b>	1.2" For all sizes	
<b>Sizes*</b>	2'x4'	4'x4'
<b>Weights</b>	14LBS	28LBS

**Open Tread 44%**

**High UV stabilizer additives**

\*Changes in temperature may cause minor expansion/contraction



- ✓ Available in 2'x4' or 4'x4'
- ✓ Will span up to 36" with reinforcement
- ✓ 16" span without reinforcement

